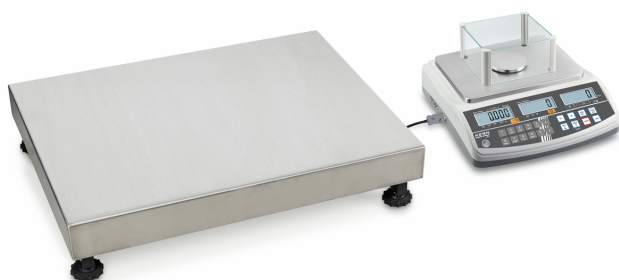


KERN CCS 10K-6



Counting system to count the smallest parts in large quantities, maximum number of parts which can be displayed is 999,999



Category	
Brand	KERN
Product category	Industrial scale
Product group	Counting system
Product family	CCS

Measuring System	
Reference scale - item number	CFS 300-3
Quantity scale - Item number	KFP 15V20M
Construction type of the scale	Multi-range balance
Weighing system	Strain gauge
Reference scale - Weighing capacity [Max]	0,3 kg
Quantity scale - Weighing capacity [Max]	15 kg
Quantity scale - Readability [d]	0,0005 kg
Reference scale - Readability [d]	1 mg
Reproducibility	0,000002 kg
Reference scale - Reproducibility	2 mg
Quantity scale - Reproducibility	0,0005 kg
Linearity	±
Reference scale - Linearity	4 mg
Quantity scale - Linearity	0,0015 kg
Adjustment options	Adjusting with external weight
Recommended adjusting weight	15 kg (F1)
Stabilization time	2 s
Eccentric loading at 1/3 [Max]	0,000006 kg
Reference scale - Eccentric loading at 1/3 [Max]	6 mg
Quantity scale - Eccentric loading at 1/3 [Max]	0,0025 kg
Default unit	kg
Units	g
Loadcell type	aluminum Alloy IP64

Display	
Display type	LCD
Display backlight	✓
Display digit height	20 mm

Construction	
Dimensions completely mounted (W×D×H)	320×330×125 mm
Dimensions weighing surface (W×D)	300×240 mm
Dimensions weighing surface	300×240 mm
Dimensions weighing platform (W×D×H)	300×240×105 mm
Material housing	plastic
Material weighing plate	stainless steel
Material load cell(s)	aluminium
Level indicator	✓
Levelling feet adjustable	✓
Cable length	1,5 m
Display device cable length	3 m

Functions	
PreTare function	✓
Sum memory function	✓
Recipe/summing level	Sum A
Conversion function	✓
PLU - total	100
Tolerance weighing	✓
Counting function	✓
Counting resolution (laboratory conditions)	3.000.000
Counting reference weight can be entered	✓
Smallest piece weight when piece counting - laboratory conditions	5 mg
Smallest piece weight when piece counting - normal conditions	50 mg
Reference quantity	n (any number of pieces)
IP protection - display	IP23
IP protection - platform	IP65
IP protection - load cell	IP65
Memory function	✓
Auto-off interval(s) in battery mode/rechargeable battery mode	selectable
Auto-off interval(s) in mains power mode	5 min 30 min 15 min
Tare function	manual (multi)

KERN CCS 10K-6



Counting system to count the smallest parts in large quantities, maximum number of parts which can be displayed is 999,999

Interface

Interfaces	RS-232 standard
------------	-----------------

Power Supply

Supplied power supply	Power supply unit
-----------------------	-------------------

Plug-in power supply type	Power adapter
---------------------------	---------------

Plug-in power supply / adapter for countries - included with the delivery	EURO UK US CH
---	------------------------

Plug-in power supply / adapter for countries - optional	EURO UK US CH
---	------------------------

Input voltage power supply / power [Max]	220 V - 240 V AC, 50 Hz
--	-------------------------

Input voltage device / power [Max]	12 V, 500 mA
------------------------------------	--------------

Battery / accumulator type	Pb
----------------------------	----

Rechargeable battery	GAB-A04
----------------------	---------

Rechargeable battery operating time - backlight on	40 h
--	------

Rechargeable battery operating time - backlight off	60 h
---	------

Rechargeable battery charging time	12 h
------------------------------------	------

Rechargeable battery optional	Rchrg. battery optional
-------------------------------	-------------------------

Environmental conditions

Ambient temperature [Min]	0 °C
---------------------------	------

Ambient temperature [Max]	40 °C
---------------------------	-------

Humidity of environment [Min]	0 %
-------------------------------	-----

Humidity of environment [Max]	80 %
-------------------------------	------

Storage temperature [Min]	-20 °C
---------------------------	--------

Storage temperature [Max]	60 °C
---------------------------	-------

Approval

CE mark	✓
---------	---

Services (optional)

Article number for adjustment at the location of installation	abhängig von Auflösung/Max depends on resolution and capacity
---	---

Article number for DAkkS calibration	962-128-127
--------------------------------------	-------------

Article number for certificate of conformity (verification)	969-517
---	---------

Packing & Shipping

Delivery time	2 d
---------------	-----

Dimensions packaging (W×D×H)	630×535×350 mm
------------------------------	----------------

Shipping method	Parcel service
-----------------	----------------

Net weight approx.	7 kg
--------------------	------

Gross weight approx.	10 kg
----------------------	-------

Shipping weight	23,6 kg
-----------------	---------

Pictograms

STANDARD



OPTION

