

2025

KERN Pictograms

 360° rotatable microscope head	 Fluorescence illumination for compound microscopes With 100 W mercury lamp and filter	 Integrated scale In the eyepiece	 Battery operation Ready for battery operation. The battery type is specified for each device.
 Monocular Microscope For the inspection with one eye	 Fluorescence illumination for compound microscopes With 3 W LED illumination and filter	 SD card For data storage	 Rechargeable battery pack Rechargeable set
 Binocular Microscope For the inspection with both eyes		 USB 2.0 interface For data transmission	 Plug-in power supply 230V/50Hz in standard version for EU. On request GB, AUS or USA version.
 Trinocular Microscope For the inspection with both eyes and the additional option for the connection of a camera	 Phase contrast unit For a higher contrast	 USB 3.0 interface For data transmission	
 Abbe Condenser With high numerical aperture for the concentration and the focusing of light	 Darkfield condenser/unit For a higher contrast due to indirect illumination	 WIFI data interface: For transmitting of the picture to a mobile display device	 Integrated power supply unit Integrated in microscope. 230V/50Hz standard EU. More standards e.g. GB, AUS or USA on request.
 Halogen illumination For pictures bright and rich in contrast	 Polarising unit To polarise the light	 HDMI digital camera For direct transmitting of the picture to a display device	
 LED illumination Cold, energy-saving and especially long-life illumination	 Infinity system Infinity corrected optical system	 PC software To transfer the measurements from the device to a PC.	 Package shipment The time required to manufacture the product internally is shown in days in the pictogram.
 Incident illumination For non-transparent objects	 Zoom magnification For stereomicroscopes	 Automatic temperature compensation For measurements between 10 °C and 30 °C	 Pallet shipment The time required to manufacture the product internally is shown in days in the pictogram.
 Transmitting illumination For transparent objects	 Auto-focus For automatic control of the focus level	 Protection against dust and water splashes IPxx: The type of protection is shown in the pictogram cf. DIN EN 60529:2000-09, IEC 60529:1989+A1:1999 +A2:2013	
 Fluorescence illumination For stereomicroscopes	 Parallel optical system For stereomicroscopes, enables fatigue-proof working		

Abbreviations

C-Mount	Adapter for the connection of a camera to a trinocular microscope	SLR camera	Single-Lens Reflex camera
FPS	Frames per second	SWF	Super Wide Field (Field number at least Ø 23 mm for 10× eyepiece)
H(S)WF	High (Super) Wide Field (Eyepiece with high eye point for wearers of glasses)	W.D.	Working Distance
LWD	Long Working Distance	WF	Wide Field (Field number up to Ø 22 mm for 10× eyepiece)
N.A.	Numerical Aperture		

KERN Models A – Z

OAB-L 108

OBE-12 · OBE-13 12

OBE-S 65

OBL-12 · OBL-13 14

OBL-14 · OBL-15 16

OBL-S · OBN-S 66

OBN-13 · OBN-15 18

OBN-14 NEW 20

OBS-1 8

OBT-1 · OBT-2 NEW 10

OCM-1 22

OCS-9 24

ODC-24 88

ODC-25 NEW 89

ODC-82 · ODC-83 · ODC-84 85

ODC-85 · ODC-86 86

ODC-87 · ODC-88 · ODC-89 87

OIV-2 62

OIV-3 · OIV-9 NEW 60

OIV-6 63

OKM-1 26

OKO-1 28

OLM-1 30

OPO-1 33

ORA 92-98

ORL-B 105

ORM 99-104

OSE-4 · OZL-9 · OZM-9 71

OSE-42 36

OSF-43 38

OXM-9 90

OZB-H 81

OZB-IR 83

OZB-M 74

OZB-UE 80

OZB-UP 79

OZG-4 56

OZL-44 40

OZL-45 46

OZL-45R 48

OZL-46 42

OZL-47 44

OZL-S 67

OZM-5 50

OZM-9 70

OZM-S · OZP-S 68

OZP-5 52

OZS-5 54

NEW New model

KERN Customer Consultants

With questions about our products and services, we will be happy to advise you:

UK, BE, IE, IS, LU, NL



Maren Neff
Tel. +49 7433 9933-132
Mobil +49 151 46143240
maren.neff@kern-sohn.com



Ralf Gutbrod
Tel. +49 7433 9933-306
optics@kern-sohn.com

PL, LV, LT, EE, SK, CZ, HU



Mark Hauder
Tel. +49 7433 9933-310
Mobil +49 160 3378426
mark.hauder@kern-sohn.com



Nicole Lebherz
Tel. +49 7433 9933-201
optics@kern-sohn.com

SL, HR, AL, MK, BG, BA, ME, RO, GR, CY, GUS



Ariana Sevcenco
Tel. +49 7433 9933-203
Mobil +49 151 72434692
ariana.sevcenco@kern-sohn.com



Stephan Ade
Tel. +49 7433 9933-121
Mobil +49 171 3060086
ade@kern-sohn.com

North America, Near- & Middle East,
Africa, Asia, Oceania, TR



Corinna Matthes
Tel. +49 7433 9933-215
Mobil +49 151 44568364
corinna.matthes@kern-sohn.com

KERN Hotlines



Technical questions about our products?

You will find assistance here quickly: +49 7433 9933 - ...

Service-Hotline

for general technical questions about your KERN product

→ 199

Optical Devices

for all technical questions concerning our microscopes,
microscope cameras, refractometers, etc.

→ 777

Laboratory and Analytical Balances

for all technical questions concerning our high quality precision balances,
analytical balances (especially with electromagnetic force-compensated
measuring systems, tuning fork and high application density)

→ 444

SAUTER Measuring Instruments

for all technical questions concerning our SAUTER measuring instruments,
test benches, force measuring accessories (clamps etc.), SAUTER software

→ 555

System Solutions Industry 4.0

for all technical questions concerning the interlocking of the latest
information and communication technology with our scales, load cells
and measuring devices as well as questions about KERN software

→ 200

Calibration and Verification Service

for any questions concerning our calibration and verification service

→ 196



Refractive index measurement for laboratories and the industry

Features

- The KERN ORA refractometers are universal, maintenance-free analogue handheld refractometers
- The handy and robust design allows the easy, efficient and sustainable use in everyday life
- Manually calculated conversions and errors of the user are avoided by multiple selectable scales
- These scales are especially developed, exactly calculated and checked. They are also characterized by their thin and clear lines
- The optical system and the prism cover are made of special material which allows a low-tolerance measuring
- All ORA models are equipped with an eyepiece for easy and smooth setting for many different diopter strengths

- The models marked with "ATC" have an automatic temperature compensation which enables accurate measurement at different ambient temperatures (10 °C/30 °C)
- The following accessory-parts are included:
 - Storage box
 - Calibration liquid
 - Calibration block (if required)
 - Pipette
 - Screwdriver
 - Cleaning tissue
- Further accessories are optionally available

Technical data

- Die-cast housing of copper-aluminium alloy, chrome coated
- Measurement temperature without ATC: 20 °C
- Measurement temperature range with ATC: 10 °C/30 °C
- Dimensions of the box: 205×75×55 mm (depending on the model)
- Product length: approx. 130 – 200 mm (depending on the model)
- Net weight approx. 135 – 600 g (depending on the model)

Note: Also available with calibration certificate, see page 106



Scope of application: Sugar

The following models are particularly suitable for the measurement of the "BRIX" value. They are used to determine the sugar content in food, especially in fruit, vegetables, juice and soft drinks. In the same ideal way these refractometers serve for monitoring processes in the industry (coolant monitoring, oils, water-based mixtures).

The main scope of applications is:

- Industry: Monitoring of lubricants for process and quality control
- Food industry: Beverages, fruits and sweets
- Agriculture: Determination of the degree of ripeness of fruits for quality control in harvesting, determination of colostrum milk quality
- Restaurants and large-scale catering establishment



Model	Scales	Measuring range	Division	ATC	Price excl. of VAT ex works €
KERN					
ORA 10BB*	Brix	0 – 10 %	0,1 %		90,-
ORA 10BA	Brix	0 – 10 %	0,1 %	✓	95,-
ORA 20BB*	Brix	0 – 20 %	0,1 %		90,-
ORA 20BA	Brix	0 – 20 %	0,1 %	✓	95,-
ORA 32BA	Brix	0 – 32 %	0,2 %	✓	95,-
ORA 62BB*	Brix	28 – 62 %	0,2 %		90,-
ORA 62BA	Brix	28 – 62 %	0,2 %	✓	95,-
ORA 82BB	Brix	45 – 82 %	0,5 %		90,-
ORA 80BB	Brix	0 – 80 %	0,5 %		90,-

! * ONLY WHILE STOCKS LAST

Scope of application: Honey

The following models are particularly suitable for the measurement of the "BRIX" value, as well as the water content in honey and "degrees Baumé" to determine the relative density of liquids.

The main scope of applications is:

- Beekeeping
- Honey production

Model	Scales	Measuring range	Division	ATC	Price excl. of VAT ex works €
KERN					
ORA 3HB*	Brix Baumé Water content	58 – 92 % 38 – 43 °Bé 12 – 27 %	0,5 % 0,5 °Bé 1 %		99,-
ORA 3HA	Brix Baumé Water content	58 – 92 % 38 – 43 °Bé 12 – 27 %	0,5 % 0,5 °Bé 1 %	✓	105,-
ORA 6HB	Water content according to AOAC standard	12 – 30 %	0,1 %		110,-
ORA 6HA	Water content according to AOAC standard	12 – 30 %	0,1 %	✓	115,-

ORA 6HB + 6HA: no calibration certificate possible

! * ONLY WHILE STOCKS LAST



Scope of application: Salt

The following models are particularly suitable for the measurement and concentration control of the mass fraction of sodium chloride in water as well as of the content of NaCl (salt) in water. This is often used in the preparation and the cooking of sauces, bases for pastries, the production of brines (e.g. for white cheese) and the preparation of seafood and marinades for meat.



The main scope of applications is:

- Food industry
- Restaurants and large-scale catering establishment
- Aquaristic: Fishkeepers/Fishfarmers in sea and sweetwater

Model	Scales	Measuring range	Division	ATC	Price excl. of VAT ex works €
KERN					
ORA 1SB*	Salt content (NaCl) ‰ specific gravity	0 – 100 ‰ 1,000 – 1,070 sg	1 ‰ 0,001 sg		90,-
ORA 1SA	Salt content (NaCl) ‰ specific gravity	0 – 100 ‰ 1,000 – 1,070 sg	1 ‰ 0,001 sg	✓	95,-
ORA 3SB*	Salt content (NaCl) % Brix	0 – 28 % 0 – 32 %	0,2 % 0,2 %		90,-
ORA 3SA	Salt content (NaCl) % Brix	0 – 28 % 0 – 32 %	0,2 % 0,2 %	✓	95,-

! * ONLY WHILE STOCKS LAST

Scope of application: Wine

The following models are particularly suitable for the measurement of the content of sugar in fruits. It indicates the expected °Alcohol of the fruit. The degree of ripeness of fruit (fruit-sugar) can also be determined, such as e.g. grapes.

The main scope of applications is:

- Agriculture: Wine-growing and fruit-growing
- Wine-production
- Must and alcohol production

°Oe = Degree Oechsle, °KMW = Klosterneuburger Must balance

Model	Scales	Measuring range	Division	ATC	Price excl. of VAT ex works €
KERN					
ORA 1WB*	Oechsle KMW (Babo) Brix	0 – 140 °Oe 0 – 25 °KMW 0 – 32 %	1 °Oe 0,25 °KMW 0,2 %		90,-
ORA 1WA	Oechsle KMW (Babo) Brix	0 – 140 °Oe 0 – 25 °KMW 0 – 32 %	1 °Oe 0,25 °KMW 0,2 %	✓	95,-
ORA 3WB*	Oechsle Brix	30 – 140 °Oe 0 – 32 %	1 °Oe 0,2 %		90,-
ORA 3WA	Oechsle Brix	30 – 140 °Oe 0 – 32 %	1 °Oe 0,2 %	✓	95,-

! * ONLY WHILE STOCKS LAST



Scope of application: Beer/alcohol

The following models are particularly suitable for determining the sugar content of the original wort of beer in its unfermented state. The value can be read straightaway, without having to be converted, using the SG Wort and Degrees Plato scales. In addition, the percent by volume and percent by mass scales can be used to determine the alcohol content of clear spirits.

The main scope of applications is:

- Beer brewers
- Alcohol production



Model	Scales	Measuring range	Division	ATC	Price excl. of VAT ex works €
KERN					
ORA 3AB*	Brix Original gravity (specific weight)	0 – 32 % 1,000 – 1,130	0,2 % 0,001		90,–
ORA 3AA	Brix Original gravity (specific weight)	0 – 32 % 1,000 – 1,130	0,2 % 0,001	✓	95,–
ORA 4AB*	Plato	0 – 18° P	0,1° P		90,–
ORA 4AA	Plato	0 – 18° P	0,1° P	✓	95,–
ORA 1AB	Percentage by volume Percentage by volume	0 – 50 % (v/v) 50 – 80 % (v/v)	1 % (v/v) 2,5 % (v/v)		90,–
ORA 2AB	Percentage by mass Percentage by mass	0 – 50 % (w/w) 50 – 80 % (w/w)	1 % (w/w) 2,5 % (w/w)		90,–

! * ONLY WHILE STOCKS LAST

Scope of application: Urine

The following models are particularly suitable for the measurement of the specific gravity (sg) in urine, the quantity of serum (serumproteine) in urine (doping control among athletes), and the refractive index.

The main scope of applications is:

- Hospitals
- Doctor's surgeries/Physicians
- Medical training institutions
- Nursing homes
- Sports medicine (doping test)
- Veterinary



Model	Scales	Measuring range	Division	ATC	Price excl. of VAT ex works €
KERN					
ORA 2PB*	Serum protein Urine (spec. gravity) Refractive index	0 – 12 g/100 ml 1,000 – 1,050 1,3330 – 1,3600 nD	0,2 g/100 ml 0,002 0,0005 nD		90,–
ORA 2PA	Serum protein Urine (spec. gravity) Refractive index	0 – 12 g/100 ml 1,000 – 1,050 1,3330 – 1,3600 nD	0,2 g/100 ml 0,002 0,0005 nD	✓	95,–
ORA 5PB	Serum protein Urine (s. g. dog) Urine (s. g. cat)	2 – 14 g/100 ml 1,000 – 1,060 1,000 – 1,060	0,1 g/100 ml 0,001 0,001		90,–

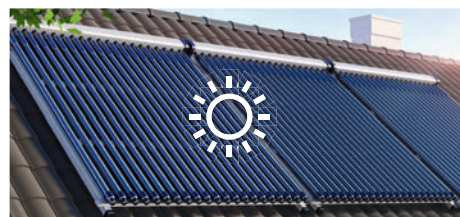
! * ONLY WHILE STOCKS LAST

Scope of application: Industry/Automotive

The following models are particularly suitable for the measurement and determination of AdBlue®, glycol concentration ethylene (EG) and propylene (PG), battery fluid (BF), urea, the freezing point of windscreen wash water (CW). Furthermore these models are suitable for the measurement of thermal exchange systems.

The main scope of applications is:

- Automotive industry: Car-workshops and producers, in accordance with the VW standards G11/G12 and G13
- Chemical industry
- Solar industry: Antifreeze monitoring



Model	Scales	Measuring range	Division	ATC	Price excl. of VAT ex works €
KERN					
ORA 4FB*	Ethylene glycol (G11/12)	-50 – 0 °C	1 °C		90,-
	Propylene glycol (G13)	-50 – 0 °C	1 °C		
	Windshield washer fluid	-40 – 0 °C	5 °C		
	Battery fluid	1,10 – 1,40 kg/l	0,01 kg/l		
ORA 4FA	Ethylene glycol (G11/12)	-50 – 0 °C	1 °C	✓	95,-
	Propylene glycol (G13)	-50 – 0 °C	1 °C		
	Windshield washer fluid	-40 – 0 °C	5 °C		
	Battery fluid	1,10 – 1,40 kg/l	0,01 kg/l		
ORA 1UB*	Urea	0 – 40 %	0,2 %		90,-
ORA 1UA	Urea	0 – 40 %	0,2 %	✓	95,-
ORA 4UB*	Urea	30 – 35 %	0,2 %		90,-
	Ethylene glycol (G11/12)	-50 – 0 °C	1 °C		
	Propylene glycol (G13)	-50 – 0 °C	1 °C		
	Windshield washer fluid	-40 – 0 °C	5 °C		
ORA 4UA	Battery fluid	1,10 – 1,40 kg/l	0,01 kg/l	✓	95,-
	Urea	30 – 35 %	0,2 %		
	Ethylene glycol (G11/12)	-50 – 0 °C	1 °C		
	Propylene glycol (G13)	-50 – 0 °C	1 °C		
	Windshield washer fluid	-40 – 0 °C	5 °C		
	Battery fluid	1,10 – 1,40 kg/l	0,01 kg/l		

! * ONLY WHILE STOCKS LAST

Scope of application: Expert applications

The following models have a special large measuring range for the refractive index and large divided scales for the measurement and clear reading of Brix values.

The main scope of applications is:

- Universal application, especially when extra large measuring ranges are required

Model	Scales	Measuring range	Division	ATC	Price excl. of VAT ex works €
KERN					
ORA 80BE	Brix	0 – 50 % 50 – 80 %	0,5 % 0,5 %		160,-
ORA 90BE	Brix	0 – 42 % 42 – 71 % 71 – 90 %	0,2 % 0,2 % 0,2 %		360,-
ORA 1RE*	Refractive index	1,333 – 1,405 nD 1,405 – 1,468 nD 1,468 – 1,517 nD	0,005 nD 0,005 nD 0,005 nD		360,-
ORA 4RR*	Refractive index	1,440 – 1,520 nD	0,001 nD		95,-

*no calibration certificate possible



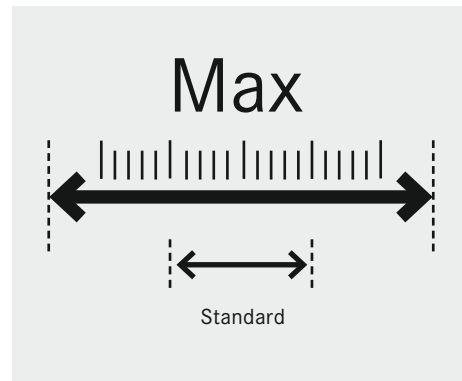
ORA 4RR



ORA 90 BE/ORA 1RE



ORA 80BE



Scope of application: Gemmology/Jewellery

This model has a special refracting-index range for jewellery. For this refractometer there is a nice leather bag in the scope of delivery included.

The main scope of applications is:

- Jewellers
- Training/Education
- Jewellery industry

Model	Scales	Measuring range	Division	Price excl. of VAT ex works €
KERN				
ORA 1GG*	Refractive index	1,30 – 1,81 nD	0,01 nD	250,-

*no calibration certificate possible



ORA 1GG

Accessory parts: Analogue refractometer – ORA



Prism coverplate with LED ORA-A1101



Calibration liquid/Contact liquid



Leather bag ORA-A2103



Calibration block

Model	Description	Price excl. of VAT ex works €
KERN		
ORA-A1101	Prism coverplate with integrated LED illumination	25,-
ORA-A2103	Leather bag for analog refractometers	25,-
ORA-A2107	Leather bag for Gem refractometers (Spare part)	35,-
ORA-A1010	Calibration liquid – distilled water – Set of 5 Volume: 5× approx. 3 ml	25,-
ORA-A1002	Contact liquid – Clove oil (for Calibration value 19,6%) Volume: approx. 2 ml	25,-
ORA-A1003	Calibration liquid – saturated salt solution Volume: approx. 2 ml	25,-
ORA-A1004	Contact liquid – Clove oil (for Calibration value 78,8%) Volume: approx. 2 ml	25,-
ORA-A1005	Calibration block for models ORA 82BB, ORA 3HA, ORA 3HB, ORA 6HA, ORA 6HB , ORA 4RR	25,-
ORA-A1007	Contact liquid – Diiodomethane “Standard” (Refractive index: 1,74 nD) Volume: approx. 2 ml	30,-
ORA-A3001	Contact liquid – Diiodomethane “Pro” (Refractive index: 1,79 nD) Volume: approx. 2 ml	40,-
ORA-A1008	Calibration block for model ORA 1GG	25,-
ORA-A2001	Prism coverplate (spare part)	21,-

Relationship overview – refractometer calibration (analogue)

Model refractometer	Calibration value	Calibration liquid	Article number liquid	Calibration block	Article number calibration block
ORA 10BA; ORA 10BB; ORA 18BB; ORA 1WA; ORA 1WB; ORA 20BA; ORA 20BB; ORA 32BA; ORA 32BB; ORA 3SA; ORA 3SB; ORA 3WA; ORA 3WB; ORA 7WA; ORA 80BB; ORA 80BE; ORA 3AB; ORA 3AA	0 % Brix	distilled water	ORA-A1010	–	–
ORA 4AA; ORA 4AB	0 ° Plato	distilled water		–	
ORA 1UA; ORA 1UB	0 % Urea	distilled water		–	
ORA 4FA; ORA 4FB; ORA 4UA; ORA 4UB	0 °C EG/PG/CW	distilled water		–	
ORA 1SA; ORA 1SB	0 ‰ Salinity	distilled water	ORA-A1010	–	–
ORA 2SA; ORA 2SB	0 % Salt (NaCl)	distilled water		–	
ORA 2AB	0 % Vol (weight)	distilled water		–	
ORA 2PA; ORA 2PB; ORA 5PB	1,000 sg Urine	distilled water		–	
ORA 62BA; ORA 62BB	29,6 % Brix	saturated salt solution	ORA-A1003	–	–
ORA 3HA; ORA 3HB; ORA 82BB	78,8 % Brix	Clove oil CAS 8000-34-8	ORA-A1004	yes	ORA-A1005
ORA 4RR	1,4875 nD	Clove oil CAS 8000-34-8	ORA-A1004	yes	ORA-A1005
ORA 6HA; ORA 6HB	19,6 % Water content	Clove oil CAS 8000-34-8	ORA-A1002	yes	ORA-A1005
ORA 1GG	1,515 nD	Diiodomethane CAS 90-11-9	ORA-A1007	yes	ORA-A1008

The oldest Precision Balance Factory in Germany

KERN & SOHN GmbH

Balances, Test Weights, Microscopes,
DAkkS Calibration Laboratory

Ziegelei 1
72336 Balingen
Germany
Tel. +49 7433 9933-0
info@kern-sohn.com
www.kern-sohn.com

Discover the multifaceted World of Balances, Microscopes and Measuring Technology from KERN online: www.kern-sohn.com

- Full KERN & SAUTER Product Range
- Convenient 24/7 Ordering
- Selection of more than 5,000 Items across Weighing and Measuring Technology, Optical Instruments as well as Accessories and Services
- Extensive Information and useful Download Options
- Technical Product Data Sheets
- Operating Instructions
- Descriptive Image and Video Material
- Useful KERN Services
- Technical Glossary
- KERN Dealer Portal
- Practical Filter and Search Functions



Follow us on our social media
channels too



Printed in Germany by KERN & SOHN GmbH
z-co-en-kp-20251

